

# UltraMatte collection



material origin: U.S.A 🇺🇸

price index: \$\$\$



- »»» scratch resistant
- »»» fingerprint resistant
- »»» smooth & soft to the touch

extremely smooth UltraMatte surface creates a subtle elegance suitable for any space



## UltraMatte collection

Our innovative UltraMatte acrylic collection is incredibly smooth and soft to the touch. The enhanced surface properties make it look as good as it feels.

\* Printed representations may vary from actual product. Please see actual sample for more accurate color and comparison.



UltraMatte panels consist of a premium quality MDF substrate with a co-extruded polymer acrylic top layer. The core material is carefully selected for its low surface variance, so the surface is not flawed by substrate imperfections.

The panels are PUR (polyurethane) laminated inside a Class-100 (ISO 5) cleanroom, which is a manufacturing process that guarantees that UltraMatte is as close to a perfect product as technologically possible.



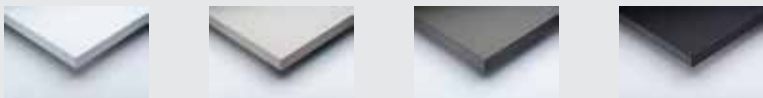
## UltraMatte collection

- »»» Top hard coat protected for excellent scratch resistance.
- »»» Color richness and UV stabilized.
- »»» Fingerprint resistance properties.

### edge band option:



matching silver



pure white pebble stone black